

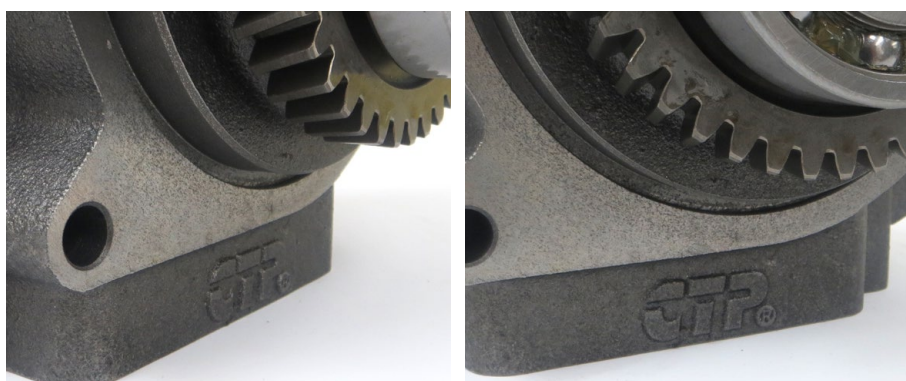


# WATER PUMPS

1. They are put through a wash process to clean the casting and machining debris to ensure any foreign particles are removed.



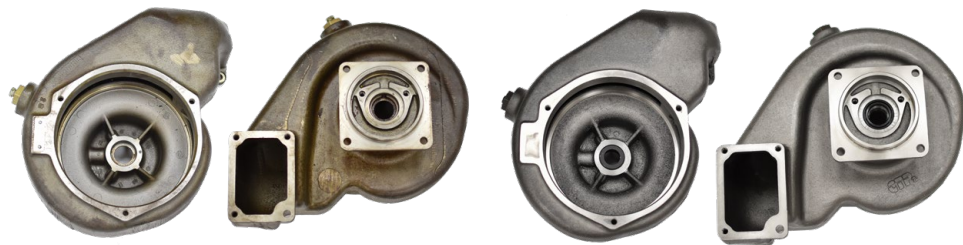
2. Come with the CTP Logo casted in the housing for easy recognition and to avoid counterfeiting.



3. Better casting finish of our pumps increases pump performance and durability.

Other manufacturers

CTP Pump



Numbers in parentheses ( ) after the part number equal the quantity required.  
 \* Other part no. not included in the list are available. Please contact your sales representative if you have any questions.  
 Part Numbers are used for reference purposes only.

4. All impellers are balanced to improve pump performance and reduce vibration.



Front

Back

5. All internal components are made to specifications to ensure CTP Components fit properly.



6. Come conveniently packed in foam to ensure the preservation of the product through transportation and storage. All pumps and components are properly packed and protected to avoid rusting.



7. Come with a stainless steel shaft to increase the longevity of the pump, while competitors use a carbon steel shaft.



Numbers in parentheses ( ) after the part number equal the quantity required.

\* Other part no. not included in the list are available. Please contact your sales representative if you have any questions.

Part Numbers are used for reference purposes only.

# CTP Water Pumps

Engine Model	Part No.	Repair Kit	Impeller	Shaft	Seal Lip	Seal Group	Bearing	Water Seal
3013, 3014, 3024/C, C2.2, C1.5	3110053	N/A	N/A	N/A	N/A	N/A	N/A	N/A
3034, 3024C	1530164	N/A	N/A	N/A	N/A	N/A	N/A	N/A
3046	1175033	N/A	N/A	N/A	N/A	N/A	N/A	N/A
3046, 3044C	1072473	N/A	N/A	N/A	N/A	N/A	N/A	N/A
3054	610441	1514825	N/A	N/A	N/A	610444	N/A	1514838
3054	3541672	2470144	N/A	N/A	N/A	N/A	N/A	N/A
3054	1514825	N/A	N/A	N/A	N/A	N/A	N/A	1514838
3054	2396142	2340636	N/A	N/A	N/A	N/A	N/A	N/A
3054C	2307355	2470144	N/A	N/A	N/A	2257738, 2257739	N/A	N/A
3056	1487192	N/A	N/A	N/A	N/A	N/A	N/A	1514838
3056E	2346110	2340636	N/A	N/A	N/A	N/A	N/A	N/A
3066	517777	N/A	517694	517695	N/A	N/A	5L6236	1252990
3066	1252991	N/A	517694	517961	N/A	N/A	5L6326	1252990
3066	1838232	N/A	1786634	1838233	N/A	N/A	0968381	1786636
3064, 3066	1252989	N/A	517694	517695	N/A	N/A	5L6326/ 2H3814	1252990
3114, 3116, 3126	4P8520	N/A	1523952	2777089	N/A	N/A	N/A	3505417
3114, 3116	4P8520	N/A	1523952	2777089	N/A	2W0712	N/A	3505417
3116	4P3683	N/A	1523952	2777089	N/A	3505417	N/A	3505417
3116	7E7398	N/A	1523952	2777089	N/A	N/A	N/A	3505417
3116	1593142	N/A	1523952	2777089	N/A	N/A	N/A	1475088
3116	3522156	N/A	1523952	2777089	N/A	N/A	N/A	3505417
3116	1265918	N/A	1523952	2777089	N/A	N/A	N/A	2W0712
3116, 3126	3522150	N/A	1523952	2777089	N/A	N/A	N/A	3505417
3116, 3126	1593140	2641260	1523952	2777089	N/A	N/A	N/A	3505417
3116, 3126E	4W7589	N/A	1523952	2777089	N/A	N/A	N/A	3505417
3114, 3116, 3126	7C6438	N/A	1523952	2777089	N/A	N/A	N/A	3505417
3116, 3126, C7	3522153	N/A	1523952	2777089	N/A	N/A	N/A	3505417
3126	3522152	2641260	1523952	2777089	N/A	N/A	N/A	3505417
3126, 3116	3522151	N/A	1523952	2777089	N/A	N/A	N/A	3505417
3126, 3126B	3522154	N/A	1523952	2777089	N/A	N/A	N/A	3505417
3126, C7, C9, 3126B/E, 3116	1208402	N/A	1523952	2777089	N/A	N/A	N/A	3505417
3126/B/E, C7	1408068	3777037	1523952	2777089	N/A	N/A	N/A	3505417
3126/E/B, C7	1593141	2641260	1523952	2777089	N/A	N/A	N/A	3505417
3126B, C7	3522139	N/A	1523952	1291170	N/A	N/A	N/A	3505417

Numbers in parentheses ( ) after the part number equal the quantity required.

\* Other part no. not included in the list are available. Please contact your sales representative if you have any questions.

Part Numbers are used for reference purposes only.

## CTP Water Pumps Cont.

Engine Model	Part No.	Repair Kit	Impeller	Shaft	Seal Lip	Seal Group	Bearing	Water Seal
3126E, C7	3522138	N/A	1523952	1291170	N/A	N/A	N/A	3505417
3176, 3176B	1025844	1074912	6I2847	1030730	8C3100	N/A	N/A	2W0712
3204	2W1223	6V6895, 6V6896	2W3535	1W5646	6V5014, 6V6917	N/A	1W5646	2W0712
3208	2W1225	6V6894	2W3535	9N3078	N/A	N/A	5P7807	2W0712
3304, 3306	1727772	1700560	1725190	2W7255	8C5210	N/A	6H3957	4W3864
3304, 3306	1727778	1700556	1726712	1725188	8H9520	N/A	6H3957	1313815
3304, 3306	1727775	1700556	1726712	1P9929	6V3988	N/A	6H3957	1313815
3304, 3306, 3306B	1727766	1700567	1725189	1725185	N/A	1691750	6H3957	1544482
3304, 3306, 3306B, 3304	1727771	2084836	1725189	1725185	N/A	1691750	6H3957	1544482
3306	1727763	1700567	1725189	1725185	1544482	1691750	6H3957	N/A
3306	1727776	1700558	1726712	1725188	8H9520	N/A	6H3957	1313815
3306	1752382	1700564	1725189	1725185	N/A	1691750	6H3957	1544482
3306, G3306B, 3304B	1727760	1700570	1725189	1725185	1544482	1691750	6H3957	N/A
3306, 3304, G3306B, 3306B	1727767	1700570	1725189	1725185	N/A	1691750	8H9789	1544482
3306, 3306B	1727762	1700560 (12H,14H series)	1725189	1725185	N/A	1691750	6H3957 (2)	1544482
3306, 3306B	1727762	1700566 (16H series)	1725189	1725185	N/A	1691750	6H3957 (2)	1544482
3306, 3306B	1727765	1700564, 1700570	1725189	1725185	N/A	1691750	N/A	1544482
3406, 3406B, 3406C	3520203	3777037	1299907	1354928	1531256	N/A	1087930	3492654
3406, 3456	3520212	3777037	1299907	1354928	1531256	N/A	1087930	3492654
3412, 3412C	4N5837	1293068	1371970	1354928	1531256	N/A	1087930	3492654
3508, 3508B, 3512, G3512	2128176	2225153	2128187	2128180	3D2824	4160603	N/A	8C5236
3516	2128177	2225152	2128184	2128180	N/A	4160603	N/A	8C5236
4.236 Perkins	7E9195	7E9197	N/A	N/A	N/A	N/A	N/A	N/A
C1.1,C1.5,C2.2,3024	3710183	N/A	N/A	N/A	N/A	N/A	N/A	N/A
C4.4, C6.6, C7.1, 3054C	3544754	N/A	N/A	N/A	N/A	N/A	N/A	N/A
C6.4, C4.2, 3066	1786633	N/A	1786634	1786635	N/A	N/A	5L6326	1786636
C7, 3126, 3126E	1268227	N/A	1523952	2777089	N/A	N/A	N/A	3505417
C7, C7.2 ,C9	3522109	N/A	2266039	1771052	N/A	N/A	N/A	3505417
C7, C9, 3126E	3522080	N/A	2266039	1771052	N/A	N/A	N/A	3505417
C7, C9, C7.2, 3126B	3522081	4289317	2266039	1771052	N/A	N/A	N/A	3505417
C9	3522125	N/A	1771056	1771052	N/A	N/A	N/A	3505417
C9	3502537	N/A	1771056	1771052	3505417	N/A	N/A	3505417
C9	3502536	N/A	N/A	N/A	N/A	N/A	N/A	3505417
C9	3522076	N/A	N/A	N/A	N/A	N/A	N/A	3505417

Numbers in parentheses ( ) after the part number equal the quantity required.

\* Other part no. not included in the list are available. Please contact your sales representative if you have any questions.

Part Numbers are used for reference purposes only.

## CTP Water Pumps Cont.

Engine Model	Part No.	Repair Kit	Impeller	Shaft	Seal Lip	Seal Group	Bearing	Water Seal
C9	3522123	N/A	1771056	3971832	N/A	N/A	N/A	3505417
C10, C12, 3176C, 3196	3522077	N/A	1766995	3971832	8C3100	N/A	1B3867(2)	3505417
C11, C13	3520205	N/A	2239143	2916905	8C3100	N/A	1B3867	3492654
C11, C13	3520206	N/A	2239143	2916905	8C3100	N/A	1B3867	3492654
C12, C15, C16, C18	1745986	N/A	1299907	1354928	1531256	3492654	1386744	3492654
C15, C16, C18, 3406, 3408C	3520211	3777037	1299907	1354928	1531256	N/A	1087930	3492654
C32, 3412, G3412	3520200	3777037	1371970	1354928	1531256	N/A	1087930	3492654
D342	6N6015	1W7029	7M5692	6N5987	N/A	1664376	2L5271, 8H9789	6N5475
D353, D9H, 594H	6N6424	1862848	6N6423	6N6422	7M4236	1664376	2H8726 (1)	4160603
D379, D398	4L8800	1W7080	7L0104	5N4378	2N2560	1664376	4L3756/5L2660	4160603
D7F, 930, 950, D5, 951B, 561C	5S6684	1W7082	9S8041	5S6116	N/A	N/A	N/A	1N9177
G3306, G3306B, G3304	1727764	1700557	1725189	1725185	1544482	N/A	6H3957 (1), 1B3867(1)	1691750
G3408, 3408, 3408E	4N1951	1279885	1371930	1354928	1531256	3492654	1087930	34926542
G3408, 3408C, 3408	3520209	3777037	1371930	1354928	1531256	N/A	1087930	3492654
G3516, 3508/B, 3512, 3516	2914313	2944935	2128183	2128179	9X4594	N/A	N/A	2624378
G3516, 3516B, 3512/B/C, 3508/B,G3512,G3520/C/E	2914311	2944935	2128183	2128179	9X4594	N/A	N/A	2624378

Numbers in parentheses ( ) after the part number equal the quantity required.

\* Other part no. not included in the list are available. Please contact your sales representative if you have any questions.

Part Numbers are used for reference purposes only.