



VANE AIR STARTERS

Vane air starters are the most commonly used air starters throughout the world. The vane motor develops maximum horsepower at a much lower speed of 5,000 to 6,000 rpm, and only requires a small amount of lubrication for maximum life. The decreased speed of the vane motor improves bearing life, and delivers more torque per pound of weight than piston air motors.

Vane Air Starter Features

- All models sealed for use in air or gas applications
- Offset design for simple mounting
- Powerful motors
- Multiple offset gear ratios: B = 2.18:1; C = 2.53:1; C = 2.69:1; D = 3.44:1, D = 3.94:1; E = 3.46:1
- Backcap ports for injection lubricating

Vane Air Starter Versatility

- Inertia and pre-engaged starters available
- 4 inlet, 4 exhaust, and 16 drive housing orientations
- 90-150 psi (6.2-10.3 bars) operation
- Inline and offset designs
- Left- and right-hand rotation available

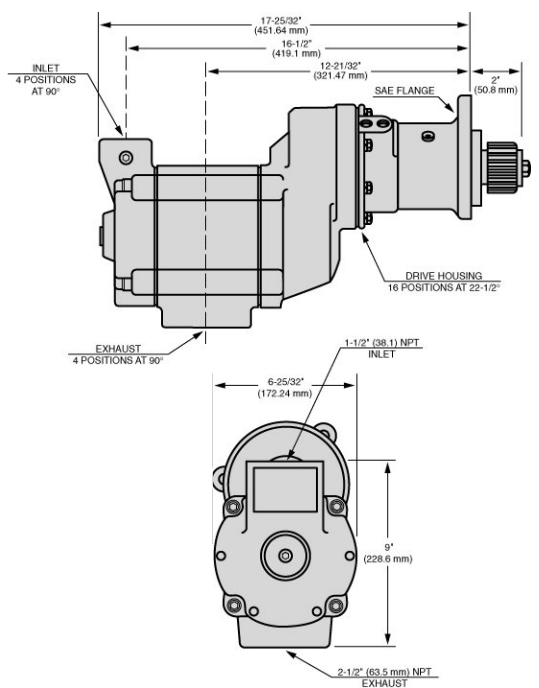
Ingersoll Rand® - Air Starters

Ingersoll Rand® - 150BM Series
150BMGE21RH6
150BMPE88R53
150BMPE88R54

Ingersoll Rand® - SS800 Series
SS815FGB03L32
SS815FGB03R31
SS825FGC03L26
SS825FGC03R25

Ingersoll Rand® - SS350 Series
SS350GE03R29
SS350GE03R31

Ingersoll Rand® - ST900 Series
ST999BP03R31
ST999CP03R25S



* Other part no. not included in the list are available. Please contact your sales representative if you have any questions. Part numbers are used for reference purposes only. Please allow 2 to 3 weeks delivery time for items not in stock. Ingersoll Rand is registered in Ireland with limited liability registered number 469272

Other parts also available:

Ingersoll Rand® - Part No.	Description
20BM-20C	BOLT - SOCKET END
SS800-K150	BULKHEAD
9BM-6-2S	BUSHING - DRIVE HOUSING
SS350-367A	CLUTCH SPRING CUP - SLEEVE
SS800-367	CUP - SPRING
SS800-K3	CYLINDER
150BM-3	CYLINDER - INGERSOLL RAND
150BM-A735	DEFLECTOR - 1.25"
20BM-98	DOWEL
150BME-9	DRIVE GEAR
ST400-13-31	DRIVE PINION
SS825R-13-25	DRIVE PINION - INGERSOLL RAND
10BM-8	DRIVE SHAFT
150LF-284	GASKET - GEAR CASE
150LF-283	GASKET - MOTOR HOUSING
SS815B-9	GEAR A
SS825C-9	GEAR AS. DRIVE
10BM-40	HOUSING - MOTOR
SS800-140	HOUSING - MOTOR
SS350-K3	HOUSING A
SS825-K300	HOUSING KIT - DRIVE
SS800R-K587	JAW AS - CLUTCH
10BM-610	KEY
SS800-TK2	KIT - AIR STARTER
34U-58-10	LOCKWASHER
HDL2	LUBRICATOR GP
NL-24-8	LUBRICATOR GP-AIR MOTOR
SS800-A202	MOTOR HOUSING COVER AS
SS800-65	NUT-ROTOR CLAMP
9BM-642	OILER, BUSHING
150BME-17	PINION
SS350E-17	PINION
SS815L-13-32	PINION - DRIVE
SS815R-13-31	PINION - DRIVE
101BMPD-17	PINION - ROTOR
150BMP-703	PISTON ASSY
SS800-K703	PISTON KIT
150LF-11A	PLATE - FRONT END
SS800G-11	PLATE - FRONT END

Ingersoll Rand® - Part No.	Description
150LF-12A	PLATE - REAR END
SS800R-12	PLATE - REAR END
599-11	PLATE CYL
SRV150	RELAY VALVE - 1.5"
20BM-200	RETAINER
20BM-67B	RETAINER - PINION
101BMP-705-1	RING - SHAFT
SS800-109	RING RETAINER
SS825-53	ROTOR
10BMP-53	ROTOR - ALUMINUM /AIR STARTER
SS350-53A	ROTOR FOR AIR STARTER
SS800-53	ROTOR FOR AIR STARTER
SS825C-17	ROTOR PINION-15 TOOTH
SS350-TK2	SEAL & VANE KIT
HDL2-TK1	SEAL KIT - TUNE-UP KIT
SS800-191	SEAT SPRING
150BMP-8-2	SHAFT - DRIVE
SM450LA-8	SHAFT - DRIVE
SS800R-8	SHAFT - DRIVE
SS800-A674-90	SILENCER
150BM-A674	SILENCER - 1.25"
SS800-A674	SILENCER - AIR STARTER
SS800-335	SLEEVE SPRING
20BM-65	SPACER
10BMP-602	SPACER, SHAFT RING
SS800-700	SPRING
SS800-583	SPRING - CLUTCH
SS800L-419	SPRING - PINION
SS800R-419	SPRING - PINION
101BMP-700-1	SPRING - PISTON RING
10BM-42-5	VANE KIT
10BM-15	WASHER
20BM-7	WASHER
SS800-224	WASHER
SS800-177	WASHER - DRIVE GEAR CUP
SS800-725	WASHER - DRIVE PINION

* Other part no. not included in the list are available. Please contact your sales representative if you have any questions. Part Numbers are used for reference purposes only

ENGINEERED FOR SUPERIOR STARTING PERFORMANCE

Ingersoll Rand® air starters are built to withstand the toughest environmental and working conditions — combining robust features and flexibility to deliver reliable, heavy-duty starting in a wide range of industrial, oil and gas, marine, power generation, rail, and mining applications.

Inertia and pre-engaged front ends deliver time-proven durability.

Integral slip clutch design eliminates need for soft-start valve or other controls, reducing shock-loading and ensuring better protection for the unit.

Forged rotating ring gear maximizes life of planetary gearing during long crank cycles.

Patent-pending slip-fit, modular motor design makes servicing simple and convenient.

Proprietary wear-resistant coating ensures best resistance to contaminated environments.

Patent-pending rotor design enables reliable operation in harsh, contaminated environments by providing an open flow path for particles.

Inlet and outlet positions identical to those on starters for easy swap-out. Left- and right-hand rotation options make these starters even more versatile.

4 inlet, 4 exhaust, and 16 drive housing orientations are flexible for any application.

Ceramic hybrid bearings are grease-sealed for life, resulting in lower friction at all speeds and cooler running over the long term.

Patent-pending, fully supported high-speed rotor extends bearing life by minimizing deflection and ensuring concentric running; a better alternative to cantilever designs.

Aerodynamic speed-limited design provides fail-safe reliability.

Elbow or straight exhaust configurations available for greater versatility.



Brutal lab testing featuring steel shot in the starter's inlet line demonstrates rugged reliability

POWER AND
EFFICIENCY
DURABILITY
VERSATILITY

