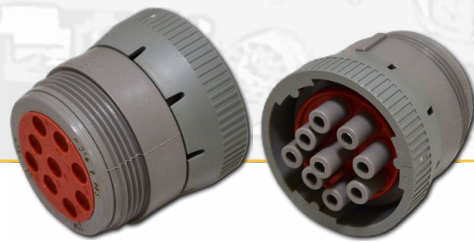


New Terminal Connector Kit

HD20 Series

Part No. 1908900



The Deutsch™ HD (Heavy Duty) Connector series was developed with the heavy-duty equipment and off highway industry in mind. HD Series connectors are a **thermoplastic cylindrical coupling** that offers arrangements from 3 to 9 cavities for heavy-duty applications. These connectors are **easy to install, environmentally sealed** and **compact in size**. They are a simple, field serviceable alternative to a repair splice. The simplicity of the HD Series Connectors help reduce assembly difficulty, maintenance time, and are built to meet industry standards to provide sustainability in demanding environments.

The HD Series Connector Features:

- ✓ **Durability** – No electrical or mechanical defects after 100 cycles of engagement or disengagement.
- ✓ **Moisture & Corrosion Resistance** – Water does not penetrate seals when submerged in 3 feet of water. No evidence of corrosion after exposure to 48 hours of salt spray testing.
- ✓ **Fluid Resistance** – Connector show no damage when exposed to most fluids used in industrial applications.
- ✓ **Vibration** – Maintains continuity and exhibits no mechanical or physical damage during or while subject to vibration.

The CTP Terminal Connector Kit comes conveniently packed in a special protective suitcase that brings over 236 pieces.



1U5804* Crimp Tool

* To ensure proper electrical performance, contact terminals must be crimped using crimping tool #1U5804, which needs to be ordered separately.

IMPORTANT: If you are looking for environmentally-sealed connectors designed specifically for cable to cable applications, please refer to our terminal connector kit DT Series Part No. 1753700.

DEUTSCH is a trademark used by TE Connectivity family of companies. All Rights Reserved. Part numbers are used for reference purposes only.