



# COMPOSITE BEARINGS

CTP Filament Wound Plastic Self-Lubricating Composite Bearings meet the need for high load, self-lubricating bearings that provide low wear rates in a wide variety of applications. Our composite bearings combine the **excellent lubricating properties** of filled PTFE with the high strength and stability of an oriented glass fiber wound structure. They employ a **tough, high strength composite structure** consisting of epoxy-impregnated, **wound glass fibers** oriented to **provide the radial and axial strength required** to support high static and dynamic bearing loads.

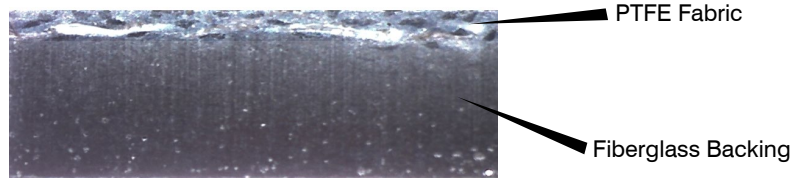
The backing of these composite bearing material is high strength glass fiber with epoxy resin and the lubricating layer of it is PTFE wound fiber or special lubricating fiber. This special structure provides an **outstanding erosion resistance** making it possible to be used in a marine environment and a low friction coefficient under high load and low speed condition. CTP composite bearings can **withstand static loads** of approximately 61,000 PSI and 20,000 PSI under dynamic loading and are suitable for use in a temperature range of -100°C to +160°C. They have low water absorption; their linear expansion coefficient and thermal expansion factor is similar to that of steel.

## Typical Applications:

- ✓ Steering linkages
- ✓ Hydraulic cylinder pivots
- ✓ King pin bearings
- ✓ Boom lifts, scissor lifts
- ✓ Cranes, hoists, lift gates
- ✓ Backhoes, trenchers
- ✓ Skid steers loaders, front-end loaders

## Features:

- ✓ High load capacity
- ✓ Excellent shock and misalignment resistance
- ✓ Excellent contamination resistance
- ✓ Very good friction and wear properties
- ✓ Good chemical resistance



## Composite Bearings

Part No.	Machine
1K8041	926, 926A, 930, 930R, IT28
1545404	414E, 416C, 416D, 416E, 416F, 420D, 420E, 420F, 422E, 422F, 424D, 426C, 428C, 428D, 428E, 428F, 430D, 430E, 430F, 432D, 432E, 432F, 434E, 434F, 436C, 438C, 438D, 442D, 442E, 444E, 444F, 450E, 450F
1832358	416C, 416D, 420D, 424B, 424B HD, 424D, 426C, 428C, 430D, 436C
2G3686	120G
2775435	16M
3G0472	120H, 120H ES, 120H NA, 120K, 120K 2, 120M, 135H, 135H NA, 943, 953, 953C, 953D, D4H, D4H XL, D5H, D5H XL, D5M, D5N
3G1076	963, 963B, 963C, 963D, 973D
3G1587	943, 953, 953C, 953D
3G2115	973, 973C, 973D

\* Other part no. not included in the list are available. Please contact your sales representative if you have any questions. Part Numbers are used for reference purposes only.

## Composite Bearings

Part No.	Machine
3G2579	120K, 120M, 12G, 12H, 12H ES, 12H NA, 12K, 12M, 130G, 140G, 140H, 140H ES, 140H NA, 140K, 140K 2, 140M, 143H, 160H, 160H ES, 160H NA, 160K, 160M, 163H, 163H NA, D6R, D6R STD, D6T, D6T LGP, D6T
3G2580	14G, 14H, 14H NA, 14M, 16G, 16H, 16H NA, 16M, 943, 953, 953C, 953D, D6R, D6R STD, D6T, D6T LGP, D6T
3G2581	120K, 120M, 120M 2, 12G, 12H, 12H ES, 12H NA, 12K, 12M, 12M 2, 12M 3, 12M 3 AWD, 130G, 140G, 140H, 140H ES, 140H NA, 140K, 140K 2, 140M, 140M 2, 140M 3, 140M 3 AWD, 143H, 160H, 160H ES, 160H
3G2582	14G, 14H, 14H NA, 14M, 16G, 16H, 16H NA, 16M, 24H, 24M
5V1713	920, 930, 930R, 950, 966C, 966R
6Y3548	D7H
7D8889	120H, 120H ES, 120H NA, 120K, 120K 2, 120M, 120M 2, 12G, 12H, 12H ES, 12H NA, 12K, 12M, 12M 2, 12M 3, 12M 3 AWD, 130G, 135H, 135H NA, 140G, 140H, 140H ES, 140H NA, 140K, 140K 2, 140M, 140M 2, 140M 3
8D3309	16G, 16H, 16H NA, 16M
8D3311	16G, 16H, 16H NA, 16M
8D4137	14G, 14H, 14H NA, 14M
8D4138	14G, 14H, 14H NA, 14M
8D4496	120M, 14G, 14H, 14H NA, 14M
8D6629	12G, 130G, 140G, 160G
8D7083	12G, 130G, 140G, 14G
8D7084	14G
8D7086	120G, 120H, 120H ES, 120H NA, 120K, 120K 2, 120M, 120M 2, 12G, 12H, 12H ES, 12H NA, 12K, 12M, 12M 2, 12M 3, 12M 3 AWD, 130G, 135H, 135H NA, 140G, 140H, 140H ES, 140H NA, 140K, 140K 2, 140M, 140M 2
8D7282	12G, 130G
8D7284	120G, 12G, 130G
8D7685	120H, 120H ES, 120H NA, 120K, 120K 2, 120M, 135H, 135H NA, 14G, 14H, 14H NA, 14M, 16G
8D7996	120G, 120H, 120H ES, 120H NA, 120K, 120K 2, 120M, 120M 2, 12G, 12H, 12H ES, 12H NA, 12K, 12M, 12M 2, 12M 3, 12M 3 AWD, 130G, 135H, 135H NA, 140G, 140H, 140H ES, 140H NA, 140K, 140K 2, 140M, 140M 2
8D8168	120H, 120H ES, 120H NA, 120K, 120K 2, 120M, 120M 2, 12G, 12H, 12H ES, 12H NA, 12K, 12M, 12M 2, 12M 3, 12M 3 AWD, 130G, 135H, 135H NA, 140G, 140H, 140H ES, 140H NA, 140K, 140K 2, 140M, 140M 2, 140M 3
8D8572	120G, 12G, 130G, 140G, 160G, 16G, 16H, 16H NA, 16M, FB221
8D8704	16G, 16H, 16H NA, 16M
8D8888	16G, 16H, 16H NA, 16M
8D9159	12H, 12H ES, 12H NA, 12K, 12M, 12M 2, 12M 3, 12M 3 AWD, 140H, 140H ES, 140H NA, 140K, 140K 2, 140M, 140M 2, 140M 3, 140M 3 AWD, 143H, 14G, 14H, 14H NA, 14M, 160H, 160H ES, 160H NA, 160K, 160M, 160M 2
8D9296	120G, 120H, 120H ES, 120H NA, 120K, 120K 2, 120M, 135H, 135H NA
8D9507	16G, 16H, 16H NA, 16M
8D9652	14G, 14H, 14H NA, 14M
8D9814	120G, 120H, 120H ES, 120H NA, 120K, 120K 2, 135H, 135H NA, 784C, 785C, 785D, 789C, 789D, 793C, 793D, 793F, 793F AC, 793F CMD, 793F OEM, 793F-XQ, 795F AC, 795F XQ, 797, 797B, 797F, 844K, 854K, 990K
8X5021	120H, 120H ES, 120H NA, 120K, 120K 2, 120M, 120M 2, 12M, 135H, 135H NA, 14M
8X5108	12H, 12H ES, 12H NA, 12K, 12M, 12M 2, 12M 3, 12M 3 AWD, 140H, 140H ES, 140H NA, 140K, 140K 2, 140M, 140M 2, 140M 3, 140M 3 AWD, 143H, 160H, 160H ES, 160H NA, 160K, 160M, 160M 2, 160M 3
9D0047	120G, VFS70
9D0057	120G
9D0178	120G, 120H, 120H ES, 120H NA, 120K, 120K 2, 120M, 120M 2, 12M, 135H, 135H NA
9D1511	120G
9D1512	120G
9H3278	814, 815, 816, 950, 955H, 966C, 966R, 977H, 980B, 988
9R7215	422E, 424D, 428B, 428C, 428D, 428E, 432D, 432E, 434E, 438, 438B, 438C, 438D, 442D, 442E, 444E

\* Other part no. not included in the list are available. Please contact your sales representative if you have any questions. Part Numbers are used for reference purposes only.